



Stadium Lane in February 2006

STADIUM LANE

Atascadero Land Preservation Society

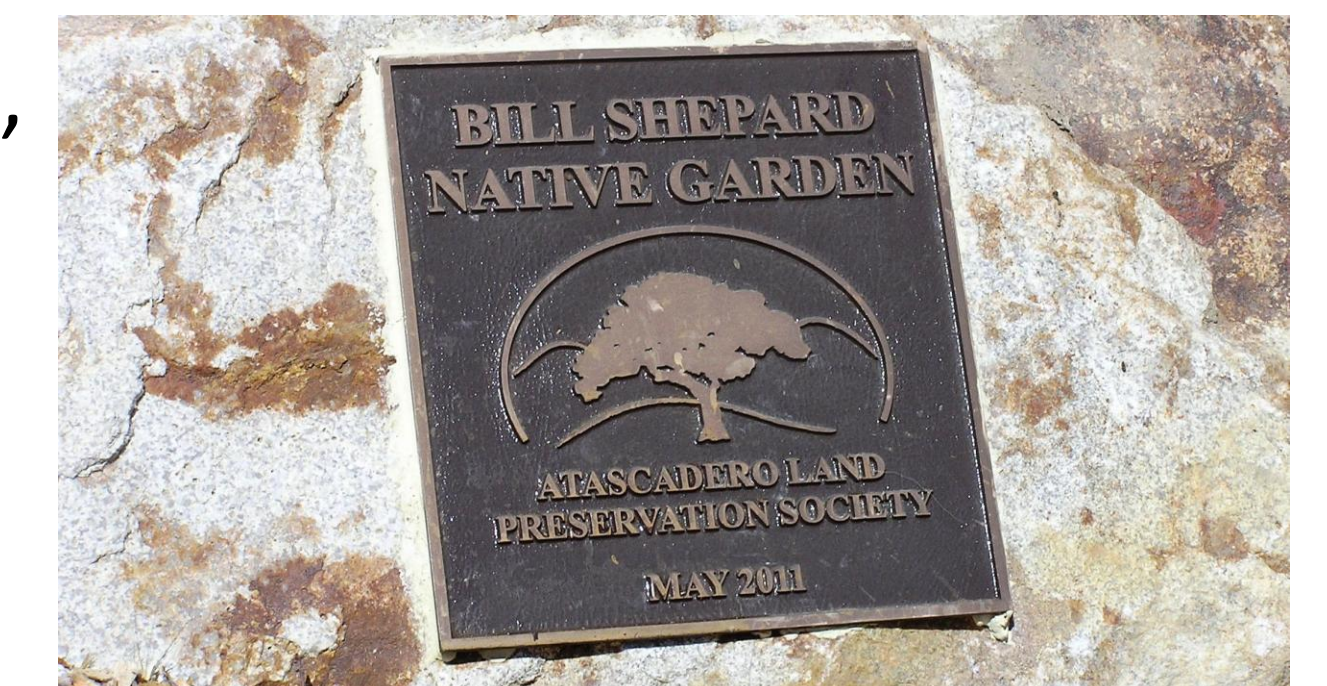
The Atascadero Land Preservation Society (ALPS) is a local, non-profit, 501(c)(3) conservation organization founded in 1989 whose mission is to preserve environmentally significant open space and natural land located in Atascadero, California.



Stadium Lane in September 2011

Stadium Lane

In 2003 the five acres at the entrance to Stadium Park was slated for residential development (green dashes on map). Instead, the cooperative owner sold the land to ALPS in order to preserve the Park entrance. Since that time, ALPS has completed resource protection improvements including the pipe fence entrance, erosion control modifications, and the installation of native plants. In 2011 ALPS dedicated the Bill Shepard Native Garden, the ALPS trail, and the Marj Mackey trail. ALPS has sponsored several Boy Scout Eagle projects that include the installation of benches, signage, and the informational kiosk.

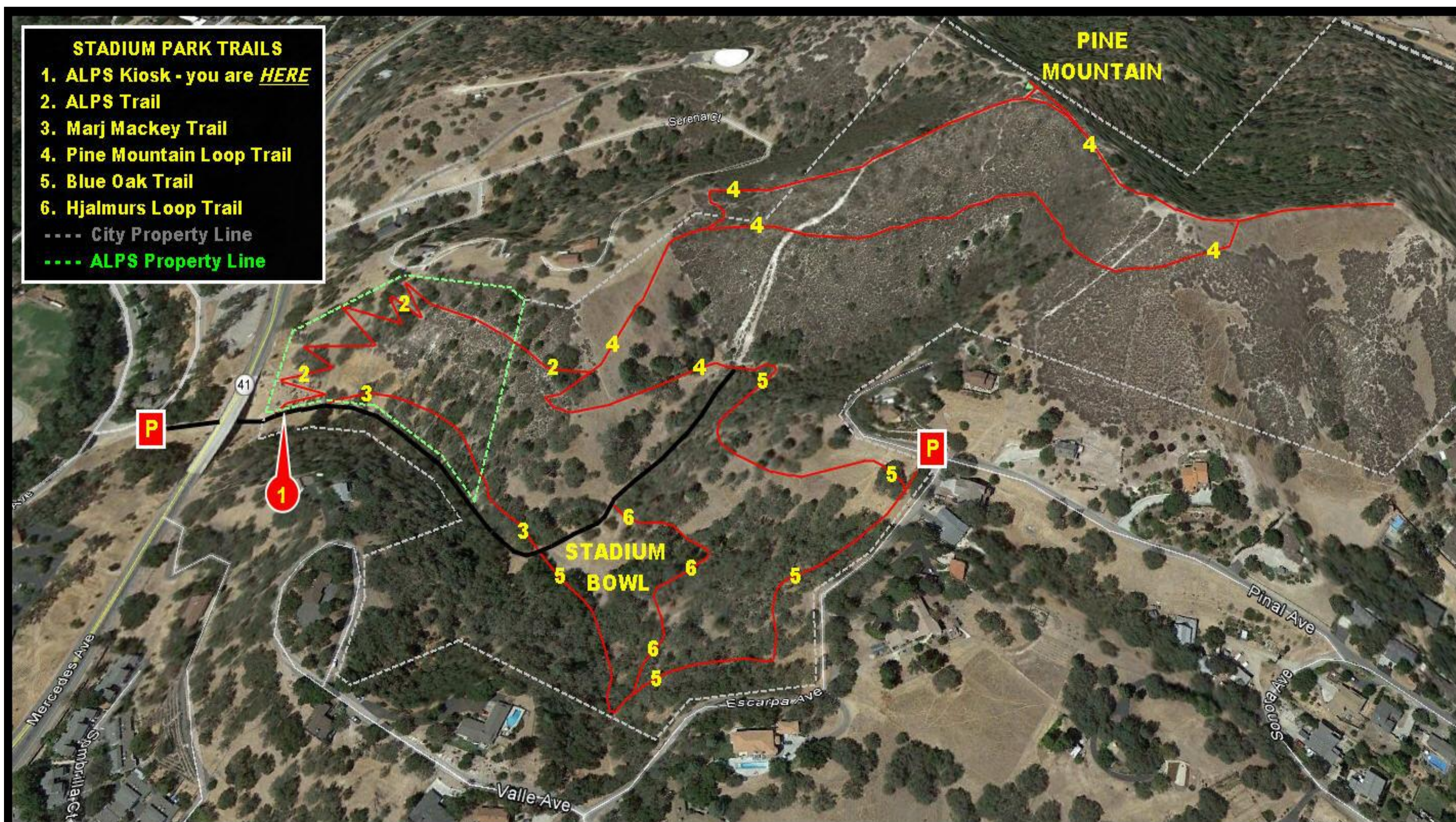


Stadium Park

In the early years of Atascadero, Stadium Park helped fulfill promises of country life combined with city culture. These promises were made by Atascadero's founder, E.G. Lewis, in printed leaflets which were distributed nationwide to attract residents to Atascadero Colony. Between 1915 and 1926, the Stadium



Park bowl was a gathering place for community events such as concerts, church services, and theater. Performances were held on a stage built under a large oak tree in the middle of the bowl that was destroyed by a storm in the 1980's. In 1926 the stage platform was moved to where the Atascadero Lake Pavilion now stands and was used as a dance floor. In the late 1940's new owners used the bowl as an archery range and club. The property was sold again and in the 1960's through 1980's it was used for various celebrations. In the 1990's the bowl fell into disrepair and was used as an informal landfill. In 1996 ALPS was instrumental in helping the City of Atascadero purchase the 27 acre natural amphitheater bowl. Stadium Park has since been restored and now boasts a total of 74 acres with a trail system that offers users a place for quiet relaxation in a beautiful native blue oak woodland close to the heart of the city. Stadium Park looks very much the same today as it did 100 years ago!



ALPS is an all-volunteer organization which relies on support from people like ***you***. ***Please*** support ALPS by making a tax deductible donation and by volunteering to help with our workdays. ***Your support is appreciated!***

Visit www.supportalps.org to:
 Download Garden Plant List
 Download Growing Tips
 View ALPS properties and native tree planting projects
 Signup on our email list for notification of events/workdays
 Donate to ALPS
 Download these panels

Trail maps are available on the City of Atascadero website, www.atascadero.org, by selecting "I want to ...", "View - City Maps", "Trail Guides"